



# Motorcycle Sealant

Solutions That Keep The World Rolling!™

## Stop Flat Tyres before They Stop You

**As tested in Rider Magazine USA. They put 9 holes in their tyres.....and kept on riding!**

“Unlike aerosol roadside repairs and even Slime, the popular sealant favoured by bicyclists and off road riders, Ride-On™’s chemicals do not adversely affect aluminium rims. This is worth considering. Over 5,000 miles and a variety of driving conditions, I found no discernible effect – positive or negative- upon wheel balance or any other area of performance...just a giant gain in a tyre’s ability to hold air in the presence of sharp metals.” Larry Brodsky – Contributing Editor, Rider Magazine USA

### Not Another Tyre Sealant.....

Tyre sealants are old business – they have been on the market for more than 50 years. Although many of the sealants available on the market do a decent job of sealing punctures, they can occasionally create more problems than they solve. Some tyre sealants have been known to cause corrosion, balancing problems, damage to the inner liner of tyre’s. Many sealants also leave residues that are difficult to clean out, and thus prevent patches and plugs from properly adhering to tyre’s.

Ride-On™ has earned its reputation by providing the most advanced tyre sealing solutions to commercial and professional fleets. Ride-On™ TPS is currently used by more than 60 municipalities, cities, counties and government agencies and more than 350 commercial companies located in over 39 US states and 9 countries. Ride-On™ is also used in more than 4,000 Police vehicles and motorcycles. These fleets have purchased and depend on the Ride-On™ TPS sealants to protect their fleet and ensure that their vehicle downtime is kept to a minimum.

### How Does Ride-On™ Work?

While you ride, a protective layer of Ride-On™ TPS, a tyre sealant containing fibres six times stronger than steel, evenly coats the inner surface of your tyre. If your tyre is punctured, the internal air pressure forces Ride-On™ into the hole, sealing it virtually instantly.

With Ride-On™ TPS tyre sealant, your tyre literally fixes itself! And since it stops slow leaks the moment they start, your tyres always stay properly inflated. Your tyres last longer, your bike handles better, your fuel economy improves and you lower your CO2 emissions footprint.

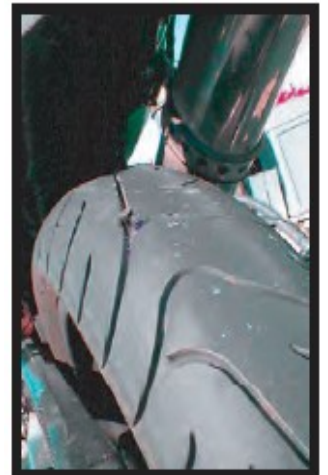
Ride-On TPS will coat and help protect your tire's contact patch with the road:



C = Coverage Area of Ride-On

Ride-On™ is designed to seal punctures from objects up to 1/8” in diameter in the tread area of your tyre. Due to a tyre's inner curvature, Ride-On™ will not seal sidewall damage or damage near the shoulder of the tyre (the outside 1-1.5” of the tyre tread). If a tyre has a cut, impact break, bruise, bulge, snag or sidewall damage, take the tyre out of service and have it inspected by a professional tyre specialist.

Examples of tires punctured in areas of marginal Ride-On TPS coverage:



# Great for Sport Bikes, Touring, Cruisers, Motocross, Trikes, Sidecars, Trailers and ATV

## Works in Tube and Tubeless Tyres

Ride-On™ TPS will eliminate 95% of your flats in tubeless tyres from objects up to 1/8" that penetrate the contact area of your tyre. Ride-On™'s efficiency in tube tyres is reduced to 65% since puncturing objects often tear the tube. It is impossible for a tyre sealant to seal a tear. It is vital to remove the puncturing object immediately from a tyre containing a tube to prevent further damage that can result in tearing the tube.

## Repair Versus Replacement

Our company takes the position that any repair in a motorcycle tyre should be treated as a temporary repair. We recommend that as soon as possible after finding an object in your tyre, you have the tyre inspected by a professional. If the recommendation is for fixing the puncture or replacing the tyre, then you should do so, and Ride-On™ can be easily washed out of tyres with plain water.

## What Should You Do if You Find a Nail or a Screw in Your Tyre

Inspect your tyres regularly for perforating objects or other damage. Look for and remove any stones, bits of glass, metal or other foreign objects wedged in the tread – these may work their way deeper into the tyre and eventually cause a puncture. Also check your tyres closely for signs of uneven wear patterns. Uneven wear may be caused by improper inflation, misalignment, tyre imbalance or damaged suspension parts. If the cause of the uneven wear is not corrected, further tyre damage will occur. Certain uneven wear patterns may also indicate the tyre has suffered internal or structural damage; such damage requires immediate attention from a professional tyre care specialist.

If you notice that an object has punctured your tyre tread, drive your bike for 3-5 miles to warm up the tyres. Remove the puncturing object and immediately drive your motorcycle for 2-3 miles so that Ride-On™ can work its way into and seal the puncture. Although Ride-On™ is effective from 40 oF to 250 oF, please note that it works best once your tyres have warmed up. For maximum safety have your tyre inspected by a professional, and if necessary repair or replace, as soon as possible after a puncture. Ride-On™ will not interfere with the application of conventional tyre plug and patch repairs, and can be easily washed out of tyres with plain water.

## Balancing and Ride and Stability Issues

The product manufactured by our leading competitor was originally designed for use in bicycle tyres, and according to their website is "WARNING: FOR HIGH SPEED APPLICATION (OVER 65MPH/100KPH) USE ONLY AS A REPAIR (EXCEPTION: TRAILER TIRES). MAY CAUSE EXCESSIVE VIBRATION WHEN INSTALLED IN FRONT TIRES OR ALL FOUR TIRES". Ride-On™ is designed to actually hydro dynamically balance tyres at highway speeds. Once installed in a tyre, it will actually dampen vibrations for the life of the tyre so you do not need periodic rebalancing. Although we don't condone speeding, our dealers and customers comment that their bikes actually run smoother at speeds as high as 150mph. Ride-On™ should be installed in tyres and wheels that have been professionally mounted and balanced. Once installed, you should not try to rebalance a tyre containing Ride-On™ – just let it do what it was formulated to do!

## Will Ride-On™ Harm My Wheels or Tyres

Ride-On™ is designed to be non-hazardous and non-flammable, and contains corrosion inhibitors that protect all alloys of steel, aluminium, magnesium and yellow metals against oxidation. Although some of our competitor's products have been documented as causing corrosion, Ride-On™ enjoys a reputation for being completely compatible with all types of wheels and tyres. Ride-On™ is currently being sold by six of Americas ten largest commercial tyre dealers. They install our products into the tyres of their commercial customers, who demand that the products not harm their aluminium or steel wheels. As their tyres can last upwards of 250,000 miles, the fact that Ride-On™ is designed to not harm ply materials or cause loss of adhesion strength helps those customers retain tyres for the fullest life possible. Letters from manufactures such as Michelin, Goodyear, Bridgestone / Firestone, Continental, Yokohama and Toyo indicate that the use of our products do not automatically void their warranties also bear witness to our success in creating a product that does not cause harm to tyre or wheels.

## A REPUTATION YOU CAN "Ride-On™"



### Ride On (UK) Ltd.

Unit C7, Harlow Business Centre

Lovet Road, Pinnacles East

Harlow, Essex CM19 5AF

[www.ride-on-uk.com](http://www.ride-on-uk.com)

Your local dealer contact information: